

SIMALFA[®] Water Based Adhesives

KülKöte[®] Temperature Regulating Technology

I S O R E G I S T E R E D



JUNE 20, 2023

Table of Contents

Our Company.....	1
Our Brands	2
Overview – English.....	3
Overview – Spanish.....	4
ISO Certificate	5



Our Company

Founded in 1993, as an environmental adhesive and coating company.

Our mission from the beginning was to develop environmental technologies that provide clients with the means to eliminate hazardous chemicals and make for a safer planet. We're extremely different than the many traditional adhesive and coating companies as we don't produce or market products that contain any known hazards such as solvents... and we never will. We have strict internal company standards to protect our environment and the people who work with our products. We know of NO other adhesive and/or coating manufacturer who can state this!

Our primary area of expertise is focused on products that contain flexible foam, textiles and other porous materials.

Key industries served

Bedding, furniture, automotive, aerospace, medical, packaging, and foam fabrication

Legal name + address

Alfa Adhesives, Inc. (aka Simalfa or KulKote)
15 Lincoln Street, Hawthorne NJ 07506

Learn more by visiting our websites

www.simalfa.com

www.kulkote-inside.com

www.kulkote.com

For additional information, contact Darren Gilmore, CEO

+1.973.423.9266 x114

darren.gilmore@simalfa.com



Our Brands

SIMALFA®

Simalfa is the first water-based, solvent-free adhesive product series in the world that provides clients with high instant tack for quick processing, a permanent bond, and is environmentally friendly to meet ecological standards and regulations.

Industries

Bedding, footwear, furniture, medical, pet products, transportation, packaging, foam fabrication, and much more.

Website

www.simalfa.com

KülKöte®

KulKote is a Temperature Regulating Technology. It's a proprietary coating consisting of water based polymers and Phase Change Materials (PCMs). It's an industrial product that is used in consumer goods. KulKote is typically applied to flexible foams, textiles, and/or fibers for the purpose of regulating body temperature.

For example, mattresses and pillows are either all foam or have foam components in them. Foams are prone to absorbing and holding body heat. As a result, the mattress/pillow gets (and stays) hot which makes for an uncomfortable night's sleep. By regulating the temperature (narrowing the temperature variations), one would enjoy a more restful night of sleep. Better sleep will result in a more fulfilled, productive, and healthier life. For athletes, this will obviously lead to a faster recovery and better performance.

Industries

Bedding, footwear, furniture, medical, pet products, sporting goods, and transportation.

Websites

www.kulkote.com (for consumers)

www.kulkote-inside.com (technical site for manufacturers)

Overview – English

General Information

ISO 9000 is a set of standards for quality management systems that is accepted around the world. Currently more than 90 countries have adopted ISO 9000 as national standards.

When you purchase a product or service from an organization that is registered to the appropriate ISO 9000 standard, you have important assurances that the quality of what you receive will be as you expect. In addition, with the latest revision of the standard, quality objectives, continual improvement, and monitoring of customer satisfaction provide the customer with increased assurances that their needs and expectations will be met.

The standards apply uniformly to organizations of any size or description.

Why we are ISO Registered?

Alfa Adhesives, Inc. is ISO 9001 registered to insure that a sound quality management system is in place and operational. We view ourselves as a “Service Company” that manufactures the best products not a typical manufacturer. Through customer satisfaction we enforce our reputation as being a superior supplier. ISO assists us in reinforcing our high level of commitment to be professional, consistent, creative, innovative and competitive for the benefit of our customers and employees. Overall, it's just smart business.



Overview – Spanish

Información General

ISO 9000 son una serie de estándares de gerenciamiento de calidad aceptada mundialmente. Actualmente más de 90 países han adoptado ISO 9000 como sus estándares de calidad nacionales. Cuando usted compra un producto o servicio de una organización que está registrada para regirse de los estándares ISO 9000, usted tiene importantes garantías que la calidad de lo que recibe es exactamente como usted la espera.

Adicionalmente, con la revisión de de los estándares, objetivos de calidad, mejoras continuas y monitoreo de satisfacción de los clientes se provee al cliente con una mayor seguridad de que sus necesidades serán cubiertas.

Los estándares aplican igualmente a organizaciones de cualquier tamaño o tipo de negocio.

¿Porque estamos registrados a ISO 9000?

Alfa Adhesives, Inc. está registrada ISO 9001 para asegurar contundentemente que la administración de nuestro sistema de calidad está en su lugar y operacionalmente en movimiento. Nosotros nos vemos como una “compañía de servicio” que produce los mejores productos del mercado, no como una típica empresa manufacturera. Mediante satisfacción del cliente reforzamos nuestra reputación como un proveedor de alto nivel. ISO nos asiste fortaleciendo nuestro alto nivel de compromiso a ser profesionales, consistentes, creativos, innovadores y competitivos para beneficio de nuestros clientes y empleados.

En conclusión esta es la forma correcta de hacer bien e inteligentemente los negocios.



Certificate of Registration

Alfa Adhesives Inc

16 Thornton Road, Oakland, New Jersey, NJ 07436

have been assessed and approved to:

ISO 9001:2015

Quality Management System

The approved management system applies to the following scope:

Design, development, manufacture and supply of water borne adhesives, coatings and ancillary products, as well as the design, development, manufacture, supply and installation of adhesive and coating delivery systems.

Original Approval:	16 th May 2001
Current Certificate:	4 th June 2023
Certificate Expiry:	4 th June 2024
Certificate Number:	US1444

Signed: Certification Officer

A handwritten signature in black ink, appearing to read 'M Byars', written over a horizontal line.

This certificate remains valid while the holder maintains their administration systems in accordance with the standards and guidelines stated above, which will be audited annually by QAS International. The holder is entitled to display the above registration mark for the duration of this certificate, which should be returned to QAS International upon reasonable request



SIMALFA®

WATER BASED ADHESIVES



Made in the USA Made in Switzerland

Combining Swiss innovation and American ingenuity, we are constantly adapting and creating products to meet your every need. Selecting a so called “me too” product adds too much risk to your business.



Options

With 150+ formulations, we can recommend a product that will fit your specific need today and easily adjust as your needs evolve tomorrow.



Proven

Countless years of development, numerous amazing products, and many years of proven market acceptance ensure your long-term success.



The Simalfa Team

Expertise to guide and assist you with applications, production processes, inventory management and much more. Always professional + timely, we never miss ship dates or an opportunity to help you.



IT'S SIMPLE



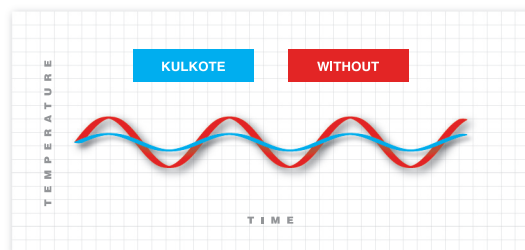
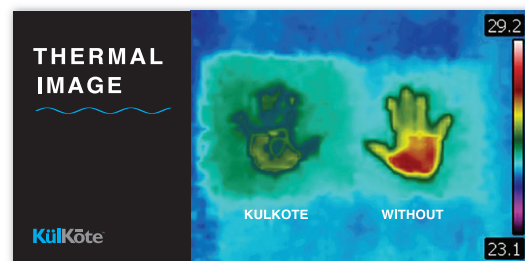
SIMALFA®



**Cools when hot.
Warms when cold.
Ideal comfort for the best night's sleep!**

Sleeping hot makes for a restless night and a tired morning. KülKote regulates temperature variations, keeping you not too hot and not too cold, so you sleep more soundly. Sleep better with KülKote. KülKote provides you with a more fulfilled, productive, and healthier life by giving you the rest you need to recharge and tackle the day.

- 100% Water-Based
- Non-Toxic
- Odor Free
- Functions for a Lifetime
- USDA Certified Biobased Product



IT'S COOL